

The Air Force in Facts & Figures

2018 USAF Almanac



Secretary of the Air Force Heather Wilson, center, tours the 5th Bomb Wing and 91st Missile Wing at Minot AFB, N.D.

Structure of the Force

There is considerable variation in how the major commands and subordinate units of the Air Force are organized. This overview describes the Air Force's primary organizational structures.

■ **DEPARTMENT OF DEFENSE (DOD)** A Cabinet agency headed by the Secretary of Defense. It comprises three military departments—Air Force, Army, and Navy—each with a civilian Secretary.

■ **JOINT CHIEFS OF STAFF** DOD's corporate military leadership. The Chairman and vice chairman serve full time in their positions, while the service chiefs also serve as the military heads of their respective services.

Current Air Force Leaders

■ **SECRETARY OF THE AIR FORCE**

Heather Wilson: May 16, 2017

■ **AIR FORCE CHIEF OF STAFF**

Gen. David L. Goldfein: July 1, 2016

■ **CHIEF MASTER SERGEANT**

OF THE AIR FORCE

CMSAF Kaleth O. Wright: Feb. 17, 2017

■ **DEPARTMENT OF THE AIR FORCE** Headed by the Secretary of the Air Force. Supporting the SECAF are the Secretariat Staff and the Chief of Staff of the Air Force, who oversees the Air Staff, among other duties. The heads of the major commands report to the CSAF.

■ **MAJOR COMMAND** Most Air Force units fall under a majcom, having broad functional responsibilities. Majcoms are organized under a unit-oriented scheme, with one or more numbered air forces, or a major non-unit scheme, with one or more centers.

■ **WING** The predominant command entity within USAF. The typical Air Force base is built around a wing.

■ **GROUP** Four groups make up a standard wing, covering operations (operates primary mission equipment and

includes such functions as intelligence); maintenance (provides weapon system maintenance); mission support (provides base support and services, including civil engineer, logistics readiness, and security forces); and medical.

■ **SQUADRON** The basic organizational building block of the Air Force. Squadrons generally work under one of the four groups to provide either mission or functional support.

■ **FLIGHTS** Several flights may exist within squadrons.

■ **FOAs, DRUs, AUXILIARY** The Air Force organization also includes field operating agencies (FOAs), carrying out specialized activities; direct reporting units (DRUs), performing specific missions not covered by majcoms; and an auxiliary.

USAF TOTAL FORCE

(As of Sept. 30, 2017)

Estimate

	FY09	FY10	FY11	FY12	FY13	FY14	FY15	FY16	FY17	FY18
Air Force Active Duty										
Officers	65,496	66,201	65,487	64,932	64,806	62,349	61,004	60,961	61,597	62,451
Enlisted	263,351	263,437	263,542	263,964	261,976	250,104	246,322	252,762	256,983	258,649
Cadets	4,561	4,558	4,341	4,022	3,912	3,879	4,031	4,160	4,207	4,000
Total Air Force Active Duty	333,408	334,196	333,370	332,918	330,694	316,332	311,357	317,883	322,787	325,100
Civilian Personnel										
Direct Hire (excluding technicians)	123,106	134,183	145,407	142,047	141,496	129,120	129,985	131,965	140,116	139,888
Air National Guard Technicians	22,391	22,657	22,139	22,859	22,568	22,225	23,448	23,044	22,542	22,179
Air Force Reserve Command Technicians	9,147	10,068	9,397	10,366	9,277	10,429	8,501	8,384	7,872	9,833
Total Direct Hire	154,644	166,908	176,943	175,272	173,341	161,774	161,934	163,393	170,530	171,900
Indirect Hire	6,346	6,564	6,776	6,714	6,501	4,823	4,090	3,704	4,570	4,633
Total Civilian Personnel	160,990	173,472	183,719	181,986	179,842	166,597	166,024	167,097	175,100	176,533
Air National Guard										
Selected Reserve Officers	14,326	14,389	14,418	14,598	14,731	15,024	15,084	14,593	15,257	14,699
Selected Reserve Enlisted	94,870	93,287	91,267	90,791	90,977	91,356	90,644	90,907	90,413	91,901
Total ANG	109,196	107,676	105,685	105,389	105,708	106,380	105,728	105,500	105,670	106,600
Air Force Reserve Command										
Selected Reserve Officers	14,753	14,560	14,535	14,303	14,060	13,817	13,937	14,896	13,672	14,719
Selected Reserve Enlisted	53,233	55,559	56,786	57,125	56,853	55,967	54,557	54,304	55,126	55,081
Total AFRC Selected Reserve	67,986	70,119	71,321	71,428	70,913	69,784	68,494	69,200	68,798	69,800
Individual Ready Reserve Officers	12,833	11,692	11,692	11,222	11,222	11,222	7,302	7,492	7,492	7,492
IRR Enlisted	30,349	28,863	28,863	24,271	24,271	24,271	29,449	29,359	29,359	29,359
Total AFRC IRR	43,182	40,555	40,555	35,493	35,493	35,493	36,751	36,851	36,851	36,851
Total AFRC	111,168	110,674	111,876	106,921	106,406	105,277	105,245	106,051	105,649	106,651
Total Ready Reserve	220,364	218,350	217,561	212,310	212,114	211,657	210,973	211,551	211,319	213,251

ARMED FORCES MANPOWER TRENDS, END STRENGTH (IN THOUSANDS)

(As of Sept. 30, 2017)

	FY09	FY10	FY11	FY12	FY13	FY14	FY15	FY16	FY17	FY18
Active Duty Military										
Air Force	333	334	333	333	331	316	311	317	323	325
Army	553	566	566	550	532	508	491	475	476	476
Marine Corps	203	202	201	198	196	188	184	182	185	185
Navy	329	328	325	318	324	326	328	327	324	328
Total	1,418	1,430	1,425	1,399	1,383	1,338	1,314	1,301	1,308	1,314
Guard and Reserve (selected reserve)										
Air National Guard	109	108	107	105	106	106	106	106	106	107
Air Force Reserve	68	70	71	71	71	70	68	69	69	70
Army National Guard	358	362	358	358	358	354	350	342	344	343
Army Reserve	205	205	205	201	198	195	199	198	199	200
Marine Corps Reserve	39	39	40	40	40	40	39	39	39	39
Naval Reserve	67	65	66	65	62	59	57	57	58	59
Total	846	849	847	840	835	824	819	811	802	818
Direct-hire Civilian (full-time equivalents)										
Air Force	155	167	177	175	173	162	162	166	166	172
Army	247	260	269	250	242	195	194	190	185	183
Navy/Marine Corps	186	195	201	201	197	182	186	191	192	198
Defense Agencies	115	120	125	133	127	185	183	191	190	189
Total	703	742	772	759	739	724	725	738	733	742



SSgt. Miguel Rodriguez with the 379th Expeditionary Aero-medical Evacuation Squadron, inputs data during a mission in Afghanistan. There are over 14,000 airmen stationed in Africa, the Mideast, and South Asia.

ACTIVE DUTY AIRMEN BY RANK

(As of Sept. 30, 2017)

Officers	Men	Women	Total
General	11	2	13
Lieutenant General	36	5	41
Major General	83	8	91
Brigadier General	145	8	153
Colonel	2,836	477	3,313
Lieutenant Colonel	8,223	1,528	9,751
Major	10,631	2,661	13,292
Captain	16,099	4,869	20,968
First Lieutenant	5,003	1,648	6,651
Second Lieutenant	5,609	1,715	7,324
Total	48,676	12,921	61,597

Enlisted	Men	Women	Total
Chief Master Sergeant	2,187	399	2,586
Senior Master Sergeant	3,977	1,034	5,011
Master Sergeant	19,670	5,106	24,776
Technical Sergeant	32,190	7,384	39,574
Staff Sergeant	50,669	11,253	61,922
Senior Airman	43,314	9,789	53,103
Airman First Class	40,188	11,087	51,275
Airman First Class	6,327	1,814	8,141
Airman Basic	8,374	2,221	10,595
Total	206,896	50,087	256,983

Academy Cadets	Men	Women	Total
Total Personnel	3,103	1,104	4,207

Total Personnel 258,675 64,112 322,787

NUMBER AND PERCENTAGE OF ACTIVE DUTY AIRMEN BY GENDER

(As of Sept. 30, 2016)

	1950	1960	1970	1980	1990	2000	2010	2017
Officers								
Male	55,474	126,014	125,136	89,156	86,714	57,204	53,838	48,676
Percentage	97.3%	97.2%	96.4%	91.3%	86.7%	82.9%	81.3%	79.0%
Female	1,532	3,675	4,667	8,493	13,331	11,819	12,363	12,921
Percentage	2.7%	2.8%	3.6%	8.7%	13.3%	17.1%	18.7%	21.0%
Total Officers	57,006	129,689	129,803	97,649	100,045	69,023	66,201	61,597
Enlisted								
Male	350,489	679,412	652,559	399,517	374,385	231,620	212,491	206,896
Percentage	98.9%	99.2%	98.6%	86.8%	86.0%	80.8%	80.7%	80.5%
Female	3,782	5,651	8,987	60,803	60,803	55,011	50,946	50,087
Percentage	1.1%	0.8%	1.4%	13.2%	14.0%	19.2%	19.3%	19.5%
Total Enlisted	354,271	685,063	661,546	460,320	435,188	286,631	263,437	256,983
Cadets								
Male	0	1,949	4,144	3,907	3,817	3,617	3,592	3,103
Percentage	0.0%	100.0%	100.0%	88.6%	87.3%	84.6%	78.8%	73.8%
Female	0	0	0	504	553	658	966	1,104
Percentage	0.0%	0.0%	0.0%	11.4%	12.7%	15.4%	21.2%	26.2%
Total Cadets	0	1,949	4,144	4,411	4,370	4,275	4,558	4,207

ACTIVE DUTY AIRMEN BY REGION

(As of Sept. 30, 2017)

REGIONS	1950	1960	1970	1980	1990	2000	2010	2017
US and its Territories	342,437	633,327	565,098	445,886	418,027	291,260	277,123	253,741
Europe	24,531	104,899	72,937	76,788	69,296	32,901	30,963	27,073
East Asia, Pacific	36,412	50,679	139,666	32,263	33,558	22,030	12,649	19,748
Africa, Mideast, S. Asia	1,491	11,160	608	674	376	8,972	891	14,417
Western Hemisphere	6,266	14,106	5,348	2,211	2,356	345	339	337
Other	140	581	7,692	147	11,620	146	12,231	7,471
Total	411,277	814,752	791,349	557,969	535,233	355,654	334,196	322,787

These are permanently assigned airmen. Those deployed for operations in Afghanistan, Syria, and Iraq are included in US (transients) and Other totals.



Maj. Kristen Hobbs, left, Cyber Blue Book liaison, Air Force Operational Test and Evaluation Center, speaks with Lt. Col. Michele Boyko in front of an MC-130J Commando II at Kirtland AFB, N.M.

ACTIVE DUTY PERSONNEL STRENGTH

(As of Sept. 30, 2017)

YEAR	NUMBER	YEAR	NUMBER
1907	3	1963	869,431
1908	13	1964	856,798
1909	27	1965	824,662
1910	11	1966	887,353
1911	23	1967	897,494
1912	51	1968	904,850
1913	114	1969	862,353
1914	122	1970	791,349
1915	208	1971	755,300
1916	311	1972	725,838
1917	1,218	1973	691,182
1918	195,023	1974	643,970
1919	25,603	1975	612,751
1920	9,050	1976	585,416
1921	11,649	1977	570,695
1922	9,642	1978	569,712
1923	9,441	1979	559,455
1924	10,547	1980	557,969
1925	9,670	1981	570,302
1926	9,674	1982	582,845
1927	10,078	1983	592,044
1928	10,549	1984	597,125
1929	12,131	1985	601,515
1930	13,531	1986	608,199
1931	14,780	1987	607,035
1932	15,028	1988	576,446
1933	15,099	1989	570,880
1934	15,861	1990	535,233
1935	16,247	1991	510,432
1936	17,233	1992	470,315
1937	19,147	1993	444,351
1938	21,089	1994	426,327
1939	23,455	1995	400,409
1940	51,165	1996	389,001
1941	152,125	1997	377,385
1942	764,415	1998	367,470
1943	2,197,114	1999	360,590
1944	2,372,292	2000	355,654
1945	2,282,259	2001	353,571
1946	455,515	2002	368,251
1947	305,827	2003	375,062
1948	387,730	2004	376,616
1949	419,347	2005	353,696
1950	411,277	2006	348,953
1951	788,381	2007	333,495
1952	983,261	2008	327,379
1953	977,593	2009	333,408
1954	947,918	2010	334,196
1955	959,946	2011	333,370
1956	909,958	2012	332,918
1957	919,835	2013	330,694
1958	871,156	2014	316,332
1959	840,435	2015	311,357
1960	814,752	2016	317,883
1961	821,151	2017	322,787
1962	884,025	2018	325,100

2018 number is an estimate.

PERSONNEL STRENGTH BY COMMANDS, FOAs, & DRUs

(As of Sept. 30, 2017)

	MILITARY	CIVILIAN	TOTAL
Active Duty Major Commands			
Air Combat Command	76,304	10,748	87,052
Air Education and Training Command	55,758	14,317	70,075
Air Force Global Strike Command	27,875	3,991	31,866
Air Force Materiel Command	17,239	61,652	78,891
Air Force Space Command	13,277	6,904	20,181
Air Force Special Operations Command	14,694	1,735	16,429
Air Mobility Command	40,247	7,723	47,970
Pacific Air Forces	28,139	3,151	31,290
US Air Forces in Europe	22,640	1,552	24,192
Total Major Commands	296,173	111,773	407,946
Field Operating Agencies (FOAs)			
Air Force Agency for Modeling and Simulation	6	15	21
Air Force Audit Agency	0	566	566
Air Force Cost Analysis Agency	11	81	92
Air Force Flight Standards Agency	115	59	174
Air Force Historical Research Agency	0	35	35
Air Force Inspection Agency	97	24	121
Air Force Legal Operations Agency	570	248	818
Air Force Manpower Analysis Agency	125	146	271
Air Force Medical Operations Agency	171	192	363
Air Force Medical Support Agency	176	71	247
Air Force Mortuary Affairs Operations	20	33	53
Air Force Office of Special Investigations	1,453	829	2,282
Air Force Operations Group	35	9	44
Air Force Personnel Center	661	1,438	2,099
Air Force Public Affairs Agency	211	32	243
Air Force Review Boards Agency	15	80	95
Air Force Safety Center	41	64	105
Total FOAs	3,707	3,922	7,629
Direct Reporting Units (DRUs)			
Air Force District of Washington	3,451	994	4,445
Air Force Operational Test and Evaluation Center	354	245	599
US Air Force Academy	1,993	1,280	3,273
Total DRUs	5,798	2,519	8,317
Other			
Hq. USAF	1,701	1,972	3,673
Other	11,201	50,445	61,646
Academy Cadets	4,207	0	4,207
Total Other	17,109	52,417	69,526
Total Strength	322,787	170,631	493,418

MONTHLY MILITARY BASIC RATES OF PAY

(Effective Jan. 1, 2018)

		YEARS OF SERVICE															
		< 2	2	3	4	6	8	10	12	14	16	18	20	22	24	26	
Pay Grade																	
COMMISSIONED OFFICERS	O-10 ^a												\$15,800	\$15,800	\$15,800	\$15,800	
	O-9 ^a												14,696	14,909	15,215	15,748	
	O-8 ^a	10,399	10,739	10,966	11,029	11,311	11,782	11,891	12,399	12,467	12,853	13,411	13,925	14,268	14,268	14,268	
	O-7 ^a	8,641	9,042	9,228	9,375	9,643	9,907	10,212	10,517	10,822	11,782	12,592	12,592	12,592	12,592	12,656	
	O-6 ^a	6,552	7,199	7,671	7,671	7,700	8,030	8,074	8,074	8,533	9,344	9,820	10,296	10,576	10,841	11,372	
	O-5	5,462	6,154	6,579	6,659	6,926	7,084	7,434	7,691	8,022	8,530	8,771	9,009	9,280	9,280	9,280	
	O-4	4,713	5,456	5,820	5,901	6,239	6,601	7,503	7,404	7,648	7,788	7,869	7,869	7,869	7,869	7,869	
	O-3	4,144	4,697	5,070	5,528	5,793	6,083	6,271	6,580	6,742	6,742	6,742	6,742	6,742	6,742	6,742	
	O-2	3,581	4,078	4,696	4,855	4,955	4,955	4,955	4,955	4,955	4,955	4,955	4,955	4,955	4,955	4,955	
	O-1	3,108	3,235	3,910	3,910	3,910	3,910	3,910	3,910	3,910	3,910	3,910	3,910	3,910	3,910	3,910	3,910
	O-3E ^b				5,528	5,793	6,083	6,271	6,580	6,841	6,991	7,195	7,195	7,195	7,195	7,195	
O-2E ^b				4,855	4,955	5,113	5,379	5,585	5,738	5,738	5,738	5,738	5,738	5,738	5,738		
O-1E ^b				3,910	4,175	4,330	4,488	4,643	4,855	4,855	4,855	4,855	4,855	4,855	4,855		
ENLISTED MEMBERS	E-9 ^c						5,174	5,291	5,439	5,612	5,788	6,069	6,307	6,556	6,939		
	E-8						4,235	4,423	4,539	4,677	4,828	5,100	5,237	5,472	5,602	5,922	
	E-7	2,944	3,213	3,337	3,499	3,627	3,845	3,968	4,187	4,369	4,493	4,625	4,676	4,848	4,940	5,291	
	E-6	2,546	2,802	2,926	3,046	3,172	3,454	3,564	3,777	3,842	3,889	3,944	3,944	3,944	3,944	3,944	
	E-5	2,333	2,490	2,610	2,733	2,925	3,126	3,291	3,311	3,311	3,311	3,311	3,311	3,311	3,311	3,311	
	E-4	2,139	2,249	2,370	2,491	2,597	2,597	2,597	2,597	2,597	2,597	2,597	2,597	2,597	2,597	2,597	
	E-3	1,931	2,052	2,177	2,177	2,177	2,177	2,177	2,177	2,177	2,177	2,177	2,177	2,177	2,177	2,177	
	E-2	1,836	1,836	1,836	1,836	1,836	1,836	1,836	1,836	1,836	1,836	1,836	1,836	1,836	1,836	1,836	
	E-1	1,638	1,638	1,638	1,638	1,638	1,638	1,638	1,638	1,638	1,638	1,638	1,638	1,638	1,638	1,638	

Amounts have been rounded to the nearest dollar.

^aBasic pay for pay grades O-7 through O-10 is limited to \$15,800.10. Basic pay for O-6 and below is limited to \$12,816.60.

^bApplicable to O-1 to O-3 with at least four years and one day of Active Duty or more than 1,460 points as an enlisted member.

^cBasic pay for the Chief Master Sergeant of the Air Force is \$8,361.

AVIATION INCENTIVE PAY

(Effective Jan. 1, 2018)

Monthly Rate	Years of Service as an Aviation Officer
\$150	Two or fewer
250	More than two
800	More than six
1,000	More than 10
700	More than 22
450	More than 24

Provided to qualified rated officers. Continuous pay ends following the 25th year of service.



386th Expeditionary Security Force Fly-Away Security Team (FAST) members wait outside of a C-17 Globemaster III prior to takeoff.

HAZARDOUS DUTY PAY

(Effective Jan. 1, 2018)

Pay Grade	Monthly Rate
O-10	\$150
O-9	150
O-8	150
O-7	150
O-6	250
O-5	250
O-4	250
O-3	175
O-2	150
O-1	150
E-9	\$240
E-8	240
E-7	240
E-6	215
E-5	190
E-4	165
E-3	150
E-2	150
E-1	150

HOUSING ALLOWANCE

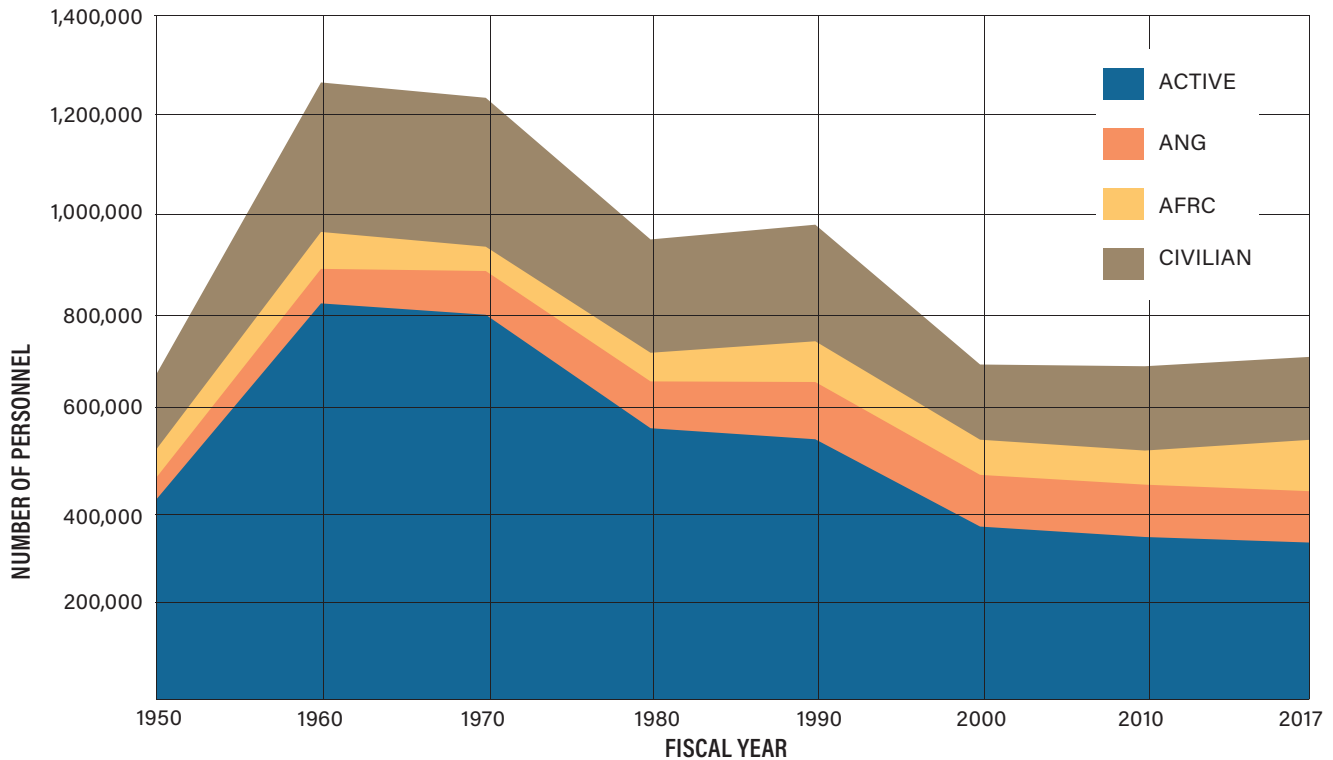
(Effective Jan. 1, 2018)

Pay Grade	Without Dependents	With Dependents
O-10	\$1,667.10	\$2,050.80
O-9	1,667.10	2,050.80
O-8	1,667.10	2,050.80
O-7	1,667.10	2,050.80
O-6	1,528.50	1,845.90
O-5	1,471.80	1,779.60
O-4	1,363.80	1,568.40
O-3	1,093.50	1,297.80
O-2	866.40	1,107.60
O-1	743.70	991.20
O-3b	1,180.20	1,395.00
O-2b	1,003.80	1,258.80
O-1b	873.00	1,163.40
E-9	\$1,010.10	1,332.30
E-8	928.50	1,228.80
E-7	855.60	1,140.30
E-6	790.50	1,053.60
E-5	711.30	948.30
E-4	618.60	824.10
E-3	575.10	766.20
E-2	548.40	730.50
E-1	548.40	730.50

The Basic Allowance for Housing Reserve Component/Transit (BAH RC/T) is a nonlocality housing allowance for members in particular circumstances, such as reservists on Active Duty for 30 or fewer days or an Active Duty member in transit from overseas.

TOTAL FORCE OVER TIME

(As of Sept. 30, 2017)



Source: Air Force Magazine's USAF Almanac; US Census Bureau; "Statistical Abstract of the United States"; "Department of Defense Selected Manpower Statistics," various years.

ANNUAL PAY FOR FEDERAL CIVILIANS

(Effective Jan. 1, 2018)

GENERAL SCHEDULE										
Grade	Step 1	Step 2	Step 3	Step 4	Step 5	Step 6	Step 7	Step 8	Step 9	Step 10
GS-1	\$18,785	\$19,414	\$20,039	\$20,660	\$21,285	\$21,650	\$22,267	\$22,891	\$22,915	\$23,502
GS-2	21,121	21,624	22,323	22,915	23,175	23,857	24,539	25,221	25,903	26,585
GS-3	23,045	23,813	24,581	25,349	26,117	26,885	27,653	28,421	29,189	29,957
GS-4	25,871	26,733	27,595	28,457	29,319	30,181	31,043	31,905	32,767	33,629
GS-5	28,945	29,910	30,875	31,840	32,805	33,770	34,735	35,700	36,665	37,630
GS-6	32,264	33,339	34,414	35,489	36,564	37,639	38,714	39,789	40,864	41,939
GS-7	35,854	37,049	38,244	39,439	40,634	41,829	43,024	44,219	45,414	46,609
GS-8	39,707	41,031	42,355	43,679	45,003	46,327	47,651	48,975	50,299	51,623
GS-9	43,857	45,319	46,781	48,243	49,705	51,167	52,629	54,091	55,553	57,015
GS-10	48,297	49,970	51,517	53,127	54,737	56,347	57,957	59,567	61,177	62,787
GS-11	53,062	54,831	56,600	58,369	60,138	61,907	63,676	65,445	67,214	68,983
GS-12	63,600	65,720	67,840	69,960	72,080	74,200	76,320	78,440	80,560	82,680
GS-13	75,628	78,149	80,670	83,191	85,712	88,233	90,754	93,275	95,796	98,317
GS-14	89,370	92,349	95,328	98,307	101,286	104,265	107,244	110,223	113,202	116,181
GS-15	105,123	108,627	112,131	115,635	119,139	122,643	126,147	129,651	133,155	136,659

SENIOR EXECUTIVE SERVICE

(Effective Jan. 1, 2018)

SES Pay System Structure	Minimum	Maximum
Certified SES performance appraisal system	\$126,148	\$189,600
Noncertified SES performance appraisal system	\$126,148	\$174,500

SUBSISTENCE ALLOWANCE

(Effective Jan. 1, 2018)

Officers	Enlisted Members
\$254/month	\$369/month

The pay scale does not include locality pay.