

# MAJOR COMMANDS AND AIR NATIONAL GUARD



Pilots from the 388th Fighter Wing's, 4th Fighter Squadron prepare to lead Red Flag 19-1, the Air Force's premier combat exercise, at Nellis AFB, Nev.

Photo: R. Nial Bradshaw/USAF

The Air Force has 10 major commands and two Air Reserve Components. (Air Force Reserve Command is both a majcom and an ARC.)

## ACRONYMS

<b>AA</b>	active associate: ANG/AFRC owned aircraft	<b>CFACC</b>	combined force air component commander		<b>NOSS</b>	network operations security squadron	
<b>AATTC</b>	Advanced Airlift Tactics Training Center	<b>CRF</b>	centralized repair facility	<b>GEODSS</b>	<b>PARCS</b>	Perimeter Acquisition Radar Attack Characterization System	
<b>AEHF</b>	Advanced Extremely High Frequency	<b>CRG</b>	contingency response group			<b>RAOC</b>	regional Air Operations Center
<b>AFS</b>	Air Force Station	<b>CRTC</b>	Combat Readiness Training Center	<b>GPS</b>		<b>ROTC</b>	Reserve Officer Training Corps
<b>ALCF</b>	airlift control flight	<b>CSO</b>	combat systems officer	<b>GSSAP</b>		<b>SBIRS</b>	Space Based Infrared System
<b>AOC/G/S</b>	air and space operations center/group/squadron	<b>CW</b>	combat weather			<b>SCMS</b>	supply chain management squadron
<b>ARB</b>	Air Reserve Base	<b>DCGS</b>	Distributed Common Ground Station	<b>ISR</b>		<b>SBSS</b>	Space Based Surveillance System
<b>ATCS</b>	air traffic control squadron	<b>DMSF</b>	Defense Meteorological Satellite Program	<b>JB</b>		<b>SOS</b>	special operations squadron
<b>BM</b>	battle management	<b>DSCS</b>	Defense Satellite Communications System	<b>JBASA</b>		<b>SOW</b>	special operations wing
<b>BMEWS</b>	Ballistic Missile Early Warning System	<b>DSP</b>	Defense Support Program	<b>JMS</b>		<b>SPADOC</b>	Space Defense Operations Center
<b>C2</b>	command and control	<b>EIS(G)</b>	engineering installation squadron (group)	<b>JRB</b>		<b>TACP</b>	tactical air control party
<b>C3</b>	command, control, and communications	<b>EOD</b>	explosive ordnance disposal	<b>JROTC</b>		<b>TAI</b>	total active inventory
<b>CACS</b>	command and control squadron (space)	<b>FTU</b>	formal training unit	<b>MAFFS</b>		<b>WGS</b>	Wideband Global Satcom
<b>CC</b>	combat communications	<b>GA</b>	Guardian Angel (pararescuemen, combat rescue officers, and survival,	<b>MCE</b>		<b>WXF</b>	Weather Flight
<b>CEF</b>	civil engineering flight			<b>NAS</b>			

**A**s significant subdivisions of the Air Force, major commands conduct a considerable part of the service's mission and are directly subordinate to Headquarters, USAF.

Majcoms are organized on a functional basis in the US and on a geographic basis overseas. In addition to accomplishing designated portions of USAF's worldwide activities, they organize, administer, equip, and train their subordinate elements.

The majcom sits atop a skip-echelon staffing structure, which means every other organizational level (i.e., majcom, wing, and squadron) will have a full range of staff functions. The other organizations (NAF, group, and flight) are tactical, mission-centered echelons. These tactical echelons are designed to increase operational effectiveness without the burden of additional staff functions.

# ACC



## Air Combat Command

**Headquarters:** JB Langley-Eustis, Va.

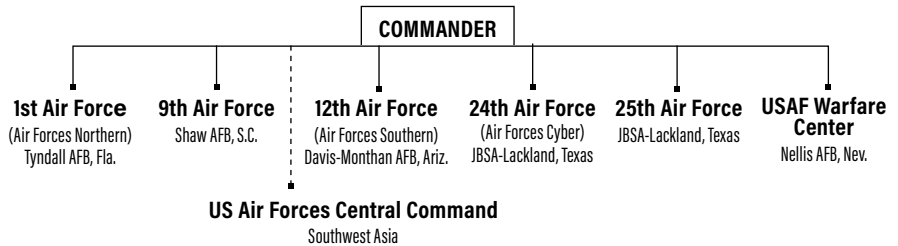
**Date of current designation:** June 1, 1992

**Commander:** Gen. James M. "Mike" Holmes

### Primary Mission

Primary force provider of combat airpower—fighter, conventional bomber, reconnaissance, battle management, and electronic combat aircraft—to combatant commands. Provide command, control, communications, and intelligence (C3I) systems. Conduct global information operations.

### ACC Structure



PERSONNEL		
Active Duty	Civilian	Total
80,349	N/A	N/A

EQUIPMENT (TAI)	
Fighter/Attack	659
Helicopter	39
ISR/BM/C3	366
Trainer	45

WINGS/CENTERS	LOCATION	AIRCRAFT/MISSION/WEAPON
1st Fighter Wing (FW)	JB Langley-Eustis, Va.	F-22, T-38A
4th FW	Seymour Johnson AFB, N.C.	F-15E
9th Reconnaissance Wing	Beale AFB, Calif.	RQ-4, T-38A, U-2
20th FW	Shaw AFB, S.C.	F-16CM
23rd Wing	Moody AFB, Ga.	A-10C, HC-130J, HH-60G
53rd Wing	Eglin AFB, Fla.	A-10C, B-1B, B-2, B-52H, BQM-167A, E-9A, F-15C/D/E, F-16C/D, F-22A, F-35A, HC-130J, HH-60G, MQ-1, MQ-9, QF-4, QF-16, RQ-4, U-2
55th Wing	Offutt AFB, Neb.	EC-130H, OC-135B, RC-135S/U/V/W, TC-135S/W, WC-135
57th Wing	Nellis AFB, Nev.	A-10C, EC-130, F-15, F-15E, F-16, F-22A, F-35A, HH-60G (23rd Wing), MQ-9
67th Cyberspace Wing	JBSA-Lackland, Texas	Cyberspace operations
70th ISR Wing (ISRW)	Fort Meade, Md.	Cryptologic operations
93rd Air Ground Operations Wing	Moody AFB, Ga.	Battlefield airmen operations, support
99th Air Base Wing (ABW)	Nellis AFB, Nev.	Base support
319th ABW	Grand Forks AFB, N.D.	Base support
325th FW	Tyndall AFB, Fla.	F-22A
355th Wing	Davis-Monthan AFB, Ariz.	A-10, EC-130H, (55th Wing), F-16CG, HC-130J, HH-60G (23rd Wing)
363rd ISRW	JB Langley-Eustis, Va.	Multi-intelligence analysis, targeting
366th FW	Mountain Home AFB, Idaho	F-15E
388th FW	Hill AFB, Utah	F-16C/D, F-35A
432nd Wing	Creech AFB, Nev.	MQ-1, MQ-9, RQ-170
480th ISRW	JB Langley-Eustis, Va.	DCGS, cyber ISR, CFACC support, signals intelligence integration
461st Air Control Wing (ACW)	Robins AFB, Ga.	E-8C (AA)
505th Command and Control Wing	Hurlburt Field, Fla.	Command and control operational-level tactics, testing, training
552nd ACW	Tinker AFB, Okla.	E-3B/C/G
557th Weather Wing	Offutt AFB, Neb.	Weather information
601st Air & Space Operations Center	Tyndall AFB, Fla.	Plan and direct air operations
624th Operations Center	JBSA-Lackland, Texas	Plan/direct cyber operations
633rd ABW	JB Langley-Eustis, Va.	Joint base facilities support
688th Cyberspace Wing	JBSA-Lackland, Texas	Information operations, engineering installations
Air Force Rescue Coordination Center	Tyndall AFB, Fla.	National search and rescue coordination
Air Force Technical Applications Center	Patrick AFB, Fla.	Nuclear treaty monitoring, nuclear event detection

**A TU-2S Dragon Lady flying high above Beale AFB, Calif.**



Photo: AIC Tristan Vriglianco

# AETC



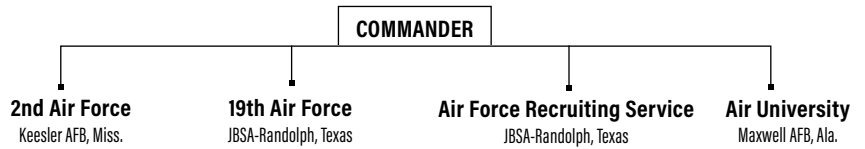
## Air Education and Training Command

**Headquarters:** JBSA-Randolph, Texas  
**Date of current designation:** July 1, 1993  
**Commander:** Lt. Gen. Steven L. Kwast\*

### Primary Mission

Recruit, train, and educate airmen through basic military training, initial and advanced technical training, and professional military education.

### AETC Structure



PERSONNEL		
Active Duty	Civilian	Total
56,303	14,536	70,839

EQUIPMENT (TAI)	
Fighter/Attack	212
Helicopter	44
Special Operations Forces	15
Tanker	18
Trainer	1,132
Transport	31

MAJOR UNITS	LOCATION	AIRCRAFT/MISSION/WEAPON
12th Flying Training Wing (FTW)	JBSA-Randolph, Texas	T-1A, T-6A, T-38C (CSO at NAS Pensacola, Fla.)
14th FTW	Columbus AFB, Miss.	T-1A, T-6A, T-38C (A-29 at Moody AFB, Ga.)
17th Training Wing (TRW)	Goodfellow AFB, Texas	Technical training
33rd Fighter Wing (FW)	Eglin AFB, Fla.	F-35
37th TRW	JBSA-Lackland, Texas	Basic military and technical training
42nd Air Base Wing (ABW)	Maxwell AFB, Ala.	Base support
47th FTW	Laughlin AFB, Texas	T-1A, T-6A, T-38C
49th Wing	Holloman AFB, N.M.	MQ-1, MQ-9, QF-16
56th FW	Luke AFB, Ariz.	F-16, F-35
58th Special Operations Wing	Kirtland AFB, N.M.	CV-22, HC-130J/P/N, HH-60G, MC-130H/J/P, UH-1N, TH-1H
59th Medical Wing	JBSA-Lackland, Texas	Wilford Hall Ambulatory Surgical Center
71st FTW	Vance AFB, Okla.	T-1A, T-6A, T-38C
80th FTW	Sheppard AFB, Texas	T-6A, T-38C
81st TRW	Keesler AFB, Miss.	Technical training
82nd TRW	Sheppard AFB, Texas	Technical training
97th Air Mobility Wing	Altus AFB, Okla.	C-17, KC-135R
314th Air Mobility Wing	Little Rock AFB, Ark.	C-130J
502nd ABW	JBSA-Fort Sam Houston, Texas	JBSA facilities support
Air Force Profession of Arms Center of Excellence	JBSA-Randolph, Texas	Professional training
Air Force Institute of Technology	Wright-Patterson AFB, Ohio	Postgraduate education
Carl A. Spaatz Center for Officer Education	Maxwell AFB, Ala.	Officer professional military education (PME)
Curtis E. LeMay Center for Doctrine Dev. & Education	Maxwell AFB, Ala.	Air Force doctrine development
Ira C. Eaker Center for Professional Dev.	Maxwell AFB, Ala.	Professional and technical continuing education
Jeanne M. Holm Center for Officer Accessions	Maxwell AFB, Ala.	Officer training, ROTC and JROTC oversight and Citizen Development
Muir S. Fairchild Research Information Center	Maxwell AFB, Ala.	Information resources
Thomas N. Barnes Center for Enlisted Education	Maxwell AFB, Ala.	Enlisted PME



Photo: Kemberly Groue/USAF

**A T-6 Texan II aircraft on static display at Keesler AFB, Miss., provides hands-on training.**

\*Lt. Gen. Marshall B. "Brad" Webb was nominated to be AETC commander on May 7, 2019.



# AFGSC



## Air Force Global Strike Command

**Headquarters:** Barksdale AFB, La.

**Date of current designation:** Aug. 7, 2009

**Commander:** Gen. Timothy M. Ray

### Primary Mission

Organize, train, equip, maintain, and provide ICBM forces and long-range bomber forces to combatant commanders; provide installation mission support.

### AFGSC Structure



PERSONNEL		
Active Duty	Civilian	Total
28,151	4,096	32,247

EQUIPMENT (TAI)	
Bomber	134
Helicopter	25
ICBM	400
ISR/BM/C3	4
Trainer	14

MAJOR UNITS	LOCATION	AIRCRAFT/MISSION/WEAPON
2nd Bomb Wing (BW)	Barksdale AFB, La.	B-52H
5th BW	Minot AFB, N.D.	B-52H
7th BW	Dyess AFB, Texas	B-1B
28th BW	Ellsworth AFB, S.D.	B-1B
90th Missile Wing (MW)	F. E. Warren AFB, Wyo.	Minuteman III, UH-1N
91st MW	Minot AFB, N.D.	Minuteman III, UH-1N
341st MW	Malmstrom AFB, Mont.	Minuteman III, UH-1N
377th Air Base Wing	Kirtland AFB, N.M.	Nuclear operations, expeditionary force training, base support
509th BW	Whiteman AFB, Mo.	B-2A, T-38C
595th Command and Control Group	Offutt, Neb.	Command and control, E-4B



Airmen from the 90th Missile Maintenance Squadron prepare to remove a Minuteman re-entry system in a silo at F.E. Warren AFB, Wyo.

Photo: ATC Braydon Williams

# AFMC



## Air Force Materiel Command

**Headquarters:** Wright-Patterson AFB, Ohio

**Date of current designation:** July 1, 1992

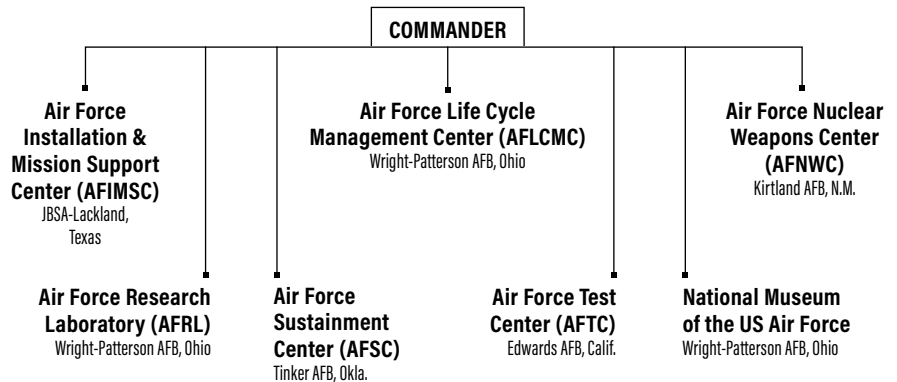
**Commander:** Lt. Gen. Robert D. McMurry Jr. (interim)\*

### Primary Mission

Research, develop, procure, test, and sustain USAF weapon systems.

PERSONNEL		
Active Duty	Civilian	Total
16,487	65,686	82,173
EQUIPMENT (TAI)		
Bomber		5
Fighter/Attack		46
Helicopter		5
ISR/BM/C3		23
Tanker		2
Trainer		15
Transport		21

### AFMC Structure



	MAJOR UNITS	LOCATION	AIRCRAFT/MISSION/WEAPON
AFIMSC	Air Force Civil Engineer Center	JBSA-Lackland, Texas	Installation support (civil engineering)
	Air Force Financial Management Center of Expertise	Buckley AFB, Colo.	Installation support (financial analysis)
	Air Force Financial Services Center	Ellsworth AFB, S.D.	Installation support (payment processing)
	Air Force Installation Contracting Agency	Wright-Patterson AFB, Ohio	Enterprise contracting support
	Air Force Security Forces Center	JBSA-Lackland, Texas	Installation support (security forces programs)
	Air Force Services Activity	JBSA-Lackland, Texas	Installation support (lodging, recreation)
AFLCMC	Air Force Program Executive Officer-Agile Combat Support	Wright-Patterson AFB, Ohio	Systems acquisition
	AFPEO-Armament	Eglin AFB, Fla.	Systems acquisition
	AFPEO-Battle Management	Hanscom AFB, Mass.	Systems acquisition
	AFPEO-Business and Enterprise Systems	Maxwell AFB-Gunter Annex, Ala.	Systems acquisition
	AFPEO-C3I and Networks	Hanscom AFB, Mass.	Systems acquisition
	AFPEO-Fighters and Bombers	Wright-Patterson AFB, Ohio	Systems acquisition
	AFPEO-ISR and Special Operations Forces	Wright-Patterson AFB, Ohio	Systems acquisition
	AFPEO-Mobility	Wright-Patterson AFB, Ohio	Systems acquisition
	AFPEO-Presidential Aircraft Recapitalization	Wright-Patterson AFB, Ohio	Systems acquisition
	AFPEO-Tanker	Wright-Patterson AFB, Ohio	Systems acquisition
	88th Air Base Wing (ABW)	Wright-Patterson AFB, Ohio	Base support
	AFNWC	AFPEO-Nuclear Command, Control, and Communications	Hanscom AFB, Mass.
	AFPEO-Strategic Systems	Kirtland AFB, N.M.	Systems acquisition
AFRL	Aerospace Systems	Wright-Patterson AFB, Ohio	Research and development (R&D)
	Air Force Office of Scientific Research	Arlington, Va.	Research
	Air Force Strategic Development Planning and Experimentation Office	Wright-Patterson AFB, Ohio	R&D
	Directed Energy	Kirtland AFB, N.M.	R&D
	Information	Rome, N.Y.	R&D
	Materials and Manufacturing	Wright-Patterson AFB, Ohio	R&D
	Munitions	Eglin AFB, Fla.	R&D
	Sensors	Wright-Patterson AFB, Ohio	R&D
	Space Vehicles	Kirtland AFB, N.M.	R&D
	711th Human Performance Wing	Wright-Patterson AFB, Ohio	Airman performance research and education
AFSC	Ogden Air Logistics Complex (ALC)	Hill AFB, Utah	Weapons sustainment
	Oklahoma City ALC	Tinker AFB, Okla.	Weapons sustainment
	Warner Robins ALC	Robins AFB, Ga.	Weapons sustainment
	72nd ABW	Tinker AFB, Okla.	Base support
	75th ABW	Hill AFB, Utah	Base and Utah Test and Training Range support
	78th ABW	Robins AFB, Ga.	Base support
	448th Supply Chain Management Wing	Tinker AFB, Okla.	Depot line repairables and consumables
635th Supply Chain Operations Wing	Scott AFB, Ill.	Global sustainment support	
AFMTC	Arnold Engineering Development Complex	Arnold AFB, Tenn.	Flight, space, and missile ground testing
	96th Test Wing (TW)	Eglin AFB, Fla.	Aircraft/system testing, base & range support
	412th TW	Edwards AFB, Calif.	Aircraft/system testing, base & range support

Lt. Gen. Arnold W. Bunch Jr. was nominated to be AFMC commander on Dec. 13, 2018.

# AFRC



## Air Force Reserve Command

**Headquarters:** Robins AFB, Ga.

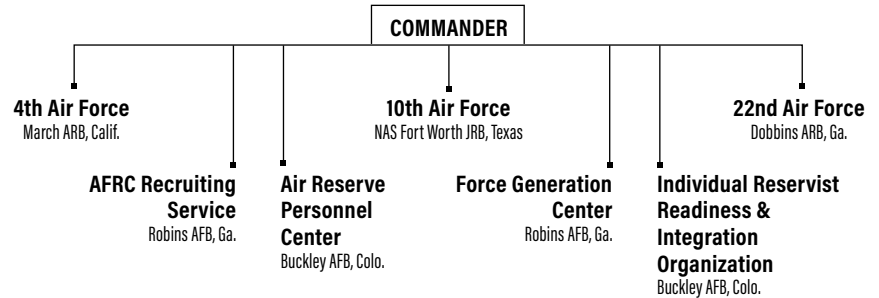
**Date of current designation:** Feb. 17, 1997

**Commander:** Lt. Gen. Richard W. Scobee

### Primary Mission

Provide strike, air mobility, special operations forces, rescue, aeromedical evacuation, aerial firefighting and spraying, weather reconnaissance, cyberspace operations, ISR, space, flying training, and other capabilities to support the Active Duty force and assist with domestic and foreign disaster relief.

### AFRC Structure



PERSONNEL			
Total (Selected reserve)	Active Duty	Civilian (Includes technicians)	Total
68,703	3,386	N/A	N/A

EQUIPMENT (TAI)	
Bomber	18
Fighter/Attack	109
Helicopter	15
ISR/BM/C3	10
Tanker	72
Transport	96

WINGS/CENTERS	LOCATION	AIRCRAFT/MISSION/WEAPON
94th Airlift Wing (AW)	Dobbins ARB, Ga.	C-130H
301st Fighter Wing (FW)	NAS Fort Worth, JRB, Texas	F-16 (Texas)
302nd AW	Peterson AFB, Colo.	C-130H (including Modular Airborne Firefighting System)
307th Bomb Wing	Barksdale AFB, La.	B-52H
310th Space Wing	Schriever AFB, Colo.	Space control and operations and warning, information operations
315th AW (classic associate)	JB Charleston, S.C.	C-17
349th Air Mobility Wing (classic associate)	Travis AFB, Calif.	C-5, C-17, KC-10
403rd Wing	Keesler AFB, Miss.	C-130J, WC-130J
419th FW (classic associate)	Hill AFB, Utah	F-35A
433rd AW	JBSA-Lackland, Texas	C-5M, formal training unit
434th Air Refueling Wing (ARW)	Grissom ARB, Ind.	KC-135R
439th AW	Westover ARB, Mass.	C-5M
442nd FW	Whiteman AFB, Mo.	A-10C
445th AW	Wright-Patterson AFB, Ohio	C-17
446th AW (classic associate)	JB Lewis-McChord, Wash.	C-17
452nd AMW	March ARB, Calif.	C-17, KC-135R
459th ARW	JB Andrews, Md.	KC-135R
482nd FW	Homestead ARB, Fla.	F-16C
507th ARW	Tinker AFB, Okla.	KC-135R
512th AW (classic associate)	Dover AFB, Del.	C-5M, C-17
514th AMW (classic associate)	JB McGuire-Dix-Lakehurst, N.J.	C-17, KC-10
908th AW	Maxwell AFB, Ala.	C-130H
910th AW	Youngstown ARS, Ohio	C-130H
911th AW	Pittsburgh Arpt., Pa.	Converting from C-130 to C-17
914th ARW	Niagara Falls ARS, N.Y.	KC-135R
916th ARW	Seymour Johnson AFB, N.C.	KC-135R
919th Special Operations Wing (classic associate)	Duke Field, Fla.	AC-130U, C-145A, C-146, C-208 MC-130H, MQ-9, PC-12, U-28
920th Rescue Wing	Patrick AFB, Fla.	HC-130N/P, HH-60G
926th Wing (classic associate)	Nellis AFB, Nev.	F-15C, F-15E, F-16, F-22A, F-35A, MQ-1 and MQ-9 (Creech AFB, Nev.), RQ-4 (Beale AFB, Calif.)
927th ARW (classic associate)	MacDill AFB, Fla.	KC-135R
931st ARW (classic associate)	McConnell AFB, Kan.	KC-135R, KC-46A
932nd AW	Scott AFB, Ill.	C-40C
934th AW	Minneapolis-St. Paul Arpt., Minn	C-130H
940th Air Refueling Wing	Beale AFB, Calif.	KC-135R
944th FW (classic and active associate)	Luke AFB, Ariz	A-10 (active associate-Davis Monthan AFB, Ariz.) F-15E (Seymour Johnson AFB, N.C.), F-16 (Luke AFB and Holloman AFB, Ariz.), F-35A (Luke AFB and Eglin AFB, Fla.)

Classic associate: Active Duty unit owns aircraft.



# AFSPC



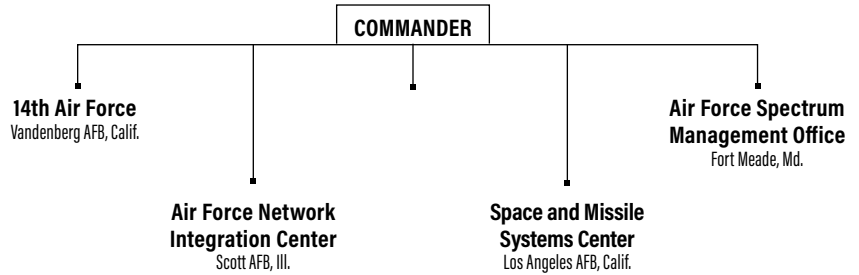
## Air Force Space Command

**Headquarters:** Peterson AFB, Colo.  
**Date of current designation:** Sept. 1, 1982  
**Commander:** Gen. John W. "Jay" Raymond

### Primary Mission

Organize, train, equip, maintain, and provide space and cyberspace operations forces. Develop, procure, and test space systems. Sustain national space launch facilities.

### AFSPC Structure



PERSONNEL		
Active Duty	Civilian	Total
9,870	6,826	16,696

EQUIPMENT			
Air Force Satellite Control Network, BMEWS, Cyber Weapon Systems, GEODSS, JMS, Launch/test ranges, Pave Phased Array Warning System, PARCS, SPADOC, Space surveillance radars.			

#### Satellite systems (on orbit):

AEHF	4	DSP	5	SBIRS	7
ATRR	1	GPS	31	SBSS	2
DMSP	5	GSSAP	4	WGS	7
DSCS	6	Milstar	5		

WINGS/CENTERS	LOCATION	AIRCRAFT/MISSION/WEAPON
21st Space Wing (SW)	Peterson AFB, Colo.	Space control/warning
30th SW	Vandenberg AFB, Calif.	Space launch, ICBM test, launch range operations
45th SW	Patrick AFB, Fla.	Space launch, launch range operations
50th SW	Schriever AFB, Colo.	C2 space operations
460th SW	Buckley AFB, Colo.	Space surveillance/warning
614th Air & Space Operations Center	Vandenberg AFB, Calif.	Theater and global space operations



Airmen watch the launch of SSO-A on a SpaceX Falcon 9 rocket from the Emergency Operations Center at Vandenberg AFB, Calif., Dec. 3, 2018.

Photo: ATC Aubree Milks

# AFSOC



## Air Force Special Operations Command

**Headquarters:** Hurlburt Field, Fla.

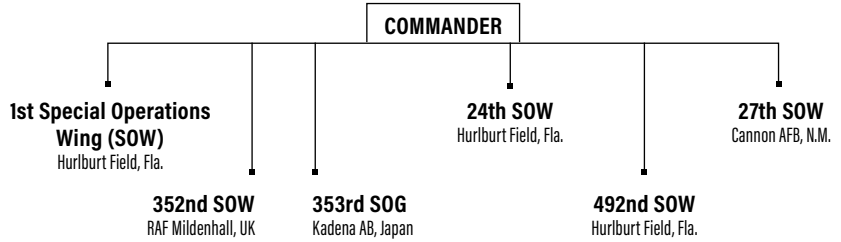
**Date of current designation:** May 22, 1990

**Commander:** Lt. Gen. Marshall B. "Brad" Webb\*

### Primary Mission

Organize, train, equip, maintain, and provide special operations airpower forces to combatant commanders.

### AFSOC Structure



PERSONNEL		
Active Duty	Civilian	Total
14,949	1,771	16,720

EQUIPMENT (TAI)	
ISR/BM/C3	44
Special Operations Forces	124

MAJOR UNITS	LOCATION	AIRCRAFT/MISSION/WEAPON
1st Special Operations Group (SOG)	Hurlburt Field, Fla.	AC-130J/U, CV-22, MC-130 H/P, MQ-9, U-28A-
27th SOG	Cannon AFB, N.M.	AC-130W, C-146A, CV-22B, MC-130J, MQ-1, MQ-9, U-28A
551st SOS	Cannon AFB, N.M.	AC-130H/W, CV-22, MC-130J, MQ-9
720th Special Tactics Group (STG)	Hurlburt Field, Fla.	Special tactics operations
724th STG	Pope Field, N.C.	Special tactics operations
752nd SOG	RAF Mildenhall, UK	CV-22, MC-130J



Photo: AIC Gage Adison Daniel

**Airmen use simulated scenarios to train at the Emergency Medical Technician Rodeo at Melrose AFS, N.M.**

\*Lt. Gen. Marshall B. "Brad" Webb was nominated to be AETC commander on May 7, 2019. Lt. Gen. James C. "Jim" Slife was confirmed to be AFSOC commander March 28.



# AMC



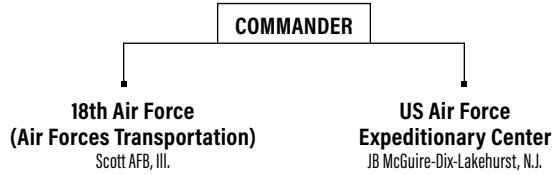
## Air Mobility Command

**Headquarters:** Scott AFB, Ill.  
**Date of current designation:** June 1, 1992  
**Commander:** Gen. Maryanne Miller

### Primary Mission

Organize, train, equip, maintain, and provide air mobility forces to sustain worldwide airpower operations.

### AMC Structure



PERSONNEL		
Active Duty	Civilian	Total
40,843	7,875	48,718

EQUIPMENT (TAI)	
Tanker	161
Transport	251

WINGS/CENTERS	LOCATION	AIRCRAFT/MISSION/WEAPON
6th Air Mobility Wing (AMW)	MacDill AFB, Fla.	C-37, KC-135R
19th Airlift Wing (AW)	Little Rock AFB, Ark.	C-130H/J
22nd Air Refueling Wing (ARW)	McConnell AFB, Kan.	KC-135R
60th AMW	Travis AFB, Calif.	C-5, C-17, KC-10
62nd AW	JB Lewis-McChord, Wash.	C-17
87th Air Base Wing (ABW)	JB McGuire-Dix-Lakehurst, N.J.	Joint base facilities support
89th AW	JB Andrews, Md.	C-20B, C-32A, C-37A/B, C-40B, VC-25A
92nd ARW	Fairchild AFB, Wash.	KC-135R
305th AMW	JB McGuire-Dix-Lakehurst, N.J.	C-17, KC-10
317th AW	Dyess AFB, Texas	C-130J
375th AMW	Scott AFB, Ill.	C-21, C-40 (AA), KC-135R (AA), NC-21
436th AW	Dover AFB, Del.	C-5, C-17
437th AW	JB Charleston, S.C.	C-17A
515th Air Mobility Operations Wing (AMOW)	JB Pearl Harbor-Hickam, Hawaii	Contingency airfield operations
521st AMOW	Ramstein AB, Germany	Contingency airfield operations
618th Air & Space Operations Center	Scott AFB, Ill.	Tanker Airlift Control Center operations
621st Contingency Response Wing	JB McGuire-Dix-Lakehurst, N.J.	Rapidly deployable bare base operations
628th ABW	JB Charleston, S.C.	Joint base facilities support



A bird's-eye view of a KC-135 Stratotanker refueling a B-52 Stratofortress.

Photo: SrA. Sean Campbell

# PACAF



## Pacific Air Forces

**Headquarters:** JB Pearl Harbor-Hickam, Hawaii

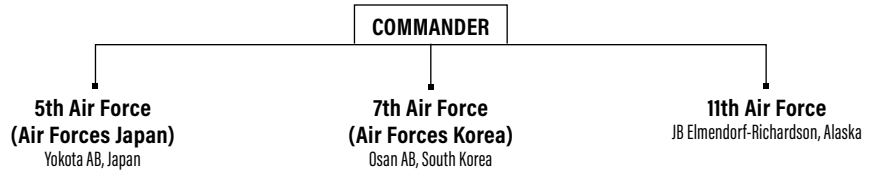
**Date of current designation:** July 1, 1957

**Commander:** Gen. Charles Q. Brown Jr.

### Primary Mission

Provide US Pacific Command integrated expeditionary Air Force capabilities, including strike, air mobility, and rescue forces.

### PACAF Structure



PERSONNEL		
Active Duty	Civilian	Total
28,468	N/A	N/A

EQUIPMENT (TAI)	
Fighter/Attack	259
Helicopter	13
ISR/BM/C3	4
Tanker	18
Transport	30

WINGS/CENTERS	LOCATION	AIRCRAFT/MISSION/WEAPON
3rd Wing	JB Elmendorf-Richardson, Alaska	C-12, C-17, E-3, F-22A
8th Fighter Wing (FW)	Kunsan AB, South Korea	F-16C/D
15th Wing	JB Pearl Harbor-Hickam, Hawaii	C-17A, C-37A, C-40B, F-22A (AA), KC-135R (AA)
18th Wing	Kadena AB, Japan	E-3B/C, F-15C/D, HH-60G, KC-135R
35th FW	Misawa AB, Japan	F-16C/D
36th Wing	Andersen AFB, Guam	Operational platform for rotating combat forces
51st FW	Osan AB, South Korea	A-10C, F-16C/D
354th FW	Eielson AFB, Alaska	F-16C/D
374th Airlift Wing	Yokota AB, Japan	C-12J, C-130H, UH-1N
607th Air & Space Operations Center (AOC)	Osan AB, South Korea	Plan and direct air operations
611th AOC	JB Elmendorf-Richardson, Alaska	Plan and direct air operations
613th AOC	JB Pearl Harbor-Hickam, Hawaii	Plan and direct air operations
673rd Air Base Wing	JB Elmendorf-Richardson, Alaska	Joint base facilities support
Regional Support Center	JB Elmendorf-Richardson, Alaska	Remote facility operations, communications, engineering



A 459th Airlift Squadron C-12 Huron flies over the cherry blossom trees at Yokota AB, Japan.

Photo: SrA Donald Hudson



# USAFE



## US Air Forces in Europe - Air Forces Africa

**Headquarters:** Ramstein AB, Germany

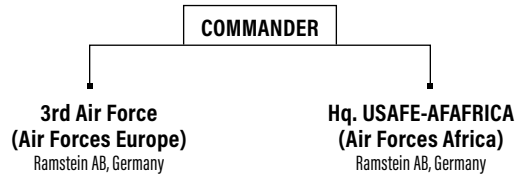
**Date of current designation:** April 20, 2012

**Commander:** Gen. Jeffrey L. Harrigian

### Primary Mission

Serves as the air component for US European Command and US Africa Command, directing air operations, including warfighting and humanitarian/peacekeeping actions, and maintains combat-ready forces for NATO responsibilities.

### USAFE Structure



PERSONNEL		
Active Duty	Civilian	Total
22,571	N/A	N/A

EQUIPMENT (TAI)	
Fighter/Attack	155
Helicopter	5
Tanker	15
Transport	22

WINGS/CENTERS	LOCATION	AIRCRAFT/MISSION/WEAPON
31st Fighter Wing (FW)	Aviano AB, Italy	F-16C/D
39th Air Base Wing	Incirlik AB, Turkey	Operational location for deployed US and NATO forces
48th FW	RAF Lakenheath, UK	F-15C/D, F-15E, HH-60G
52nd FW	Spangdahlem AB, Germany	F-16C/D
86th Airlift Wing	Ramstein AB, Germany	C-21, C-37A, C-40B, C-130J
100th Air Refueling Wing	RAF Mildenhall, UK	CV-22, KC-135R, MC-130J, RC-135V/W
435th Air Ground Operations Wing	Ramstein AB, Germany	Battlefield airmen support and operations
501st Combat Support Wing	RAF Alconbury, UK	Facilitates support for seven geographically separated units
603rd Air & Space Operations Center	Ramstein AB, Germany	Plan and direct air operations



F-15C Eagles and an F-15E Strike Eagle fly in tandem in support of ongoing theater operations in Southeast Asia.

Photo: Courtesy



# ANG



## Air National Guard

**Headquarters:** Washington, D.C.

**Date of current designation:** Sept. 18, 1947

**Director:** Lt. Gen. L. Scott Rice

### Primary Mission

Provide combat capability to the Active Duty force and security for the homeland. Support US domestic and foreign humanitarian and disaster relief.

PERSONNEL			
Total (Selected reserve)	Active Duty	Civilian (Includes technicians)	Total
107,469	15,252	N/A	N/A

EQUIPMENT (TAI)			
Fighter/Attack	575	Special Operations Forces	4
Helicopter	17	Tanker	171
ISR/BM/C3	74	Transport	209

WING (STATE)	SYSTEM/MISSION
101st Air Refueling Wing (Maine)	KC-135R, CC
102nd Intelligence Wing (Mass.)	DCGS, cyber, ISR, EISG, WXF
103rd Airlift Wing (Conn.)	C-130H
104th Fighter Wing (Mass.)	F-15C/D
105th AW (N.Y.)	C-17, EIS, WXF
106th Rescue Wing (N.Y.)	HC-130, HH-60G, GA
107th AW (N.Y.)	MQ-9
108th Wing (N.J.)	KC-135R, C-32B, intel, SOS
109th AW (N.Y.)	LC-130
110th Attack Wing (Mich.)	MQ-9, AOG, C2, cyber
111th Attack Wing (Pa.)	MQ-9, cyber, EIS
113th Wing (D.C.)	C-40C, F-16C/D, WXF
114th FW (S.D.)	F-16C/D
115th FW (Wis.)	F-16C/D, RC-26B, WXF
116th Air Control Wing (Ga.)	E-8C, WXF
117th ARW (Ala.)	KC-135R, DCGS
118th Wing (Tenn.)	MQ-9, cyber
119th Wing (N.D.)	MQ-9, ISR, WXF
120th AW (Mont.)	C-130H, WXF
121st ARW (Ohio)	KC-135R, WXF
122nd FW (Ind.)	A-10C
123rd AW (Ky.)	C-130H, CRG, special tactics, WXF, intel
124th FW (Idaho)	A-10C, TACP, cyber
125th FW (Fla.)	F-15C/D, WXF
126th ARW (Ill.)	KC-135R, SCMS
127th Wing (Mich.)	A-10C, KC-135T, WXF
128th ARW (Wis.)	KC-135R
129th RQW (Calif.)	MC-130P, HH-60G, GA
130th AW (W.Va.)	C-130H, RC-26B
131st Bomb Wing (Mo.)	B-2 (CA)
132nd Wing (Iowa)	MQ-9, RC-26B, cyber, ISR
133rd AW (Minn.)	C-130H, ALCF, WXF
134th ARW (Tenn.)	KC-135R
136th AW (Texas)	C-130H, ALCF, WXF
137th SOW (Okla.)	MC-12, EIS, SOS, TACP
138th FW (Okla.)	F-16C/D, EIS, WXF
139th AW (Mo.)	C-130H, AATTC (ANG/AFRC), ATCS
140th Wing (Colo.)	F-16C/D, CEF, WXF
141st ARW (Wash.)	KC-135R, CC, RC-26B, intel
142nd FW (Ore.)	F-15C/D, special tactics, WXF
143rd AW (R.I.)	C-130J, cyber
144th FW (Calif.)	F-15C/D, RC-26B, WXF
145th AW (N.C.)	C-130H, CEF, MAFFS
146th AW (Calif.)	C-130J, ALCF, MAFFS, WXF
147th Reconnaissance Wing (Texas)	MQ-1B, RC-26, TACP, EIS, WXF
148th FW (Minn.)	F-16C/D

WING (STATE)	SYSTEM/MISSION
149th FW (Texas)	F-16C/D
150th SOW (N.M.)	Special ops training (CA), RC-26B
151st ARW (Utah)	KC-135R
152nd AW (Nev.)	C-130H, DCGS
153rd AW (Wyo.)	C-130H, MAFFS
154th Wing (Hawaii)	C-17 (CA), F-22, KC-135R, intel, WXF
155th ARW (Neb.)	KC-135R
156th AW (Puerto Rico)	WC-130H
157th ARW (N.H.)	KC-135R
158th FW (Vt.)	F-16C, WXF
159th FW (La.)	F-15C/D, CC
161st ARW (Ariz.)	KC-135R
162nd Wing (Ariz.)	F-16, RC-26B, WXF
163rd Attack Wing (Calif.)	MQ-9, FTU, WXF
164th AW (Tenn.)	C-17A
165th AW (Ga.)	C-130H, CRTC, AOS
166th AW (Del.)	C-130H, cyber
167th AW (W.Va.)	C-17A
168th ARW (Alaska)	KC-135R
169th FW (S.C.)	F-16C/D, ATCS
171st ARW (Pa.)	KC-135R/T, WXF
172nd AW (Miss.)	C-17, ALCF
173rd FW (Ore.)	F-15C/D, FTU, ATCS
174th Attack Wing (N.Y.)	MQ-9, RC-26B, AOC, FTU,
175th Wing (Md.)	A-10C, CEF, cyber, intel
176th Wing (Alaska)	C-17 (CA), HC-130J, HH-60G, GA, RAOC
177th FW (N.J.)	F-16C, AOS, WXF
178th Wing (Ohio)	MQ-1, cyber, MCE, ISR
179th AW (Ohio)	C-130H
180th FW (Ohio)	F-16C/D
181st IW (Ind.)	DCGS, ISR, TACP, WXF
182nd AW (Ill.)	C-130H, CC, TACP
183rd FW (Ill.)	CRF, DCGS
184th IW (Kan.)	CACS, cyber, DCGS, ISR, NOSS, TACP
185th ARW (Iowa)	KC-135R
186th ARW (Miss.)	KC-135R, RC-26B, AOG, ATCS
187th FW (Ala.)	F-16C/D, RC-26B
188th Wing (Ark.)	MQ-9, MCE, ISR, DCGS
189th AW (Ark.)	C-130H, intel, FTU, WXF
190th ARW (Kan.)	KC-135R, CW
192nd FW (Va.)	F-22 (CA), cyber, DCGS
193rd SOW (Pa.)	EC-130J, AOS, CC, cyber, TACP
194th Regional Support Wing (Wash.)	CC, CW
195th Wing (Calif.)	DCGS, intel